



SOAP



FEATURES:

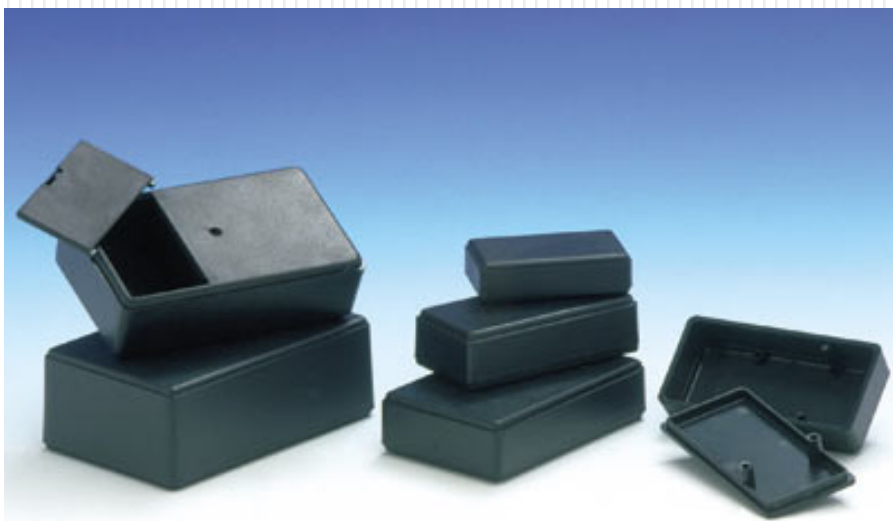
- Simple, miniature/small enclosures in ABS (UL 94 HB)
- Rounded corner design easy to hold
- Ideal for peripheral devices
- Colors: black RAL 9004, gray RAL 9018 or white RAL 9002
- Snap together assembly
- **Version I** - two case shells
- **Version II** - as I but with connector aperture in one end
- **Version III** - as I but with connector apertures in both ends
- Machining, printing and special colors on demand

Part No. Black	Part No. Gray	Part No. White	Version	Length	Width	Height	Metric Drawings
10006.9	10006.5	-	I	2.205"	1.220"	0.945"	
10006/1.9	-	-	II	2.205"	1.220"	0.945"	
10006/2.9	-	-	III	2.205"	1.220"	0.945"	
10007.9	10007.5	-	I	3.150"	2.205"	0.945"	
10014.9	-	10014.7	I	3.543"	1.811"	0.689"	
10008.9	10008.5	-	I	5.157"	2.559"	0.965"	

SOAP B

FEATURES:

- Simple, small enclosures in ABS (UL 94 HB)
- Ideal for small electronic devices
- Color: black RAL 9004
- Secured by a single self-tapping screw
- Internal PCB mounting pillars
- **Version I** - top and base molding
- **Version II** - as I, but with a battery compartment for a 9V cell
- **Version III** - as I, but with a battery compartment for two 9V cells
- Machining, printing and special colors on demand



Part No. Black	Part No. White	Part No. Transparent Blue	Version	Length	Width	Height	Drawings
10010.9	-	-	I	2.283"	1.378"	0.630"	PDF DWG
10011.9	-	-	I	3.543"	2.205"	0.906"	PDF DWG
10015.9	-	-	I	3.071"	1.535"	0.906"	PDF DWG
-	10016.7	10016.33	I	3.566"	2.252"	0.937"	PDF DWG
10012-B.9	-	-	II	3.917"	2.362"	1.181"	PDF DWG
10013-B.9	-	-	III	4.291"	2.736"	1.574"	PDF DWG



[Customizing](#)



[Catalog](#)



[Sample](#)



[Distributors](#)

[Home](#) [About Us](#) [Enclosures](#) [Technical](#) [Service Desk](#) [News](#) [Contact](#)

CALL TOLL FREE (800) 965 9872

Legal notice: copyright © 2001-2005 TEK0 Enclosures, Inc. USA. All rights reserved. Rev:2005.26.09
Teko is the registered trademark of Teko S.p.A. Italy.